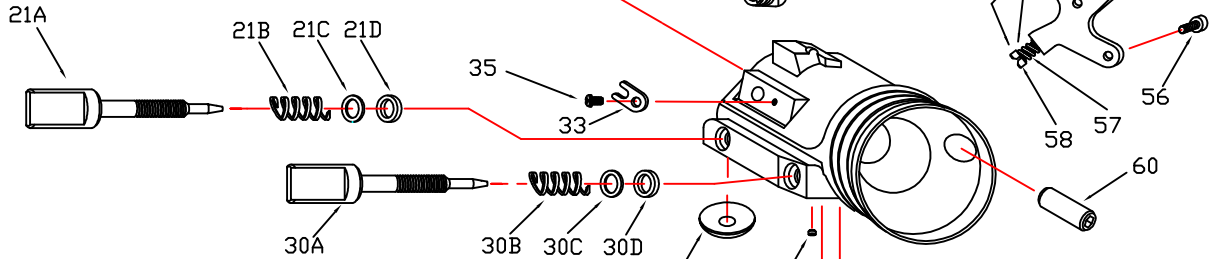
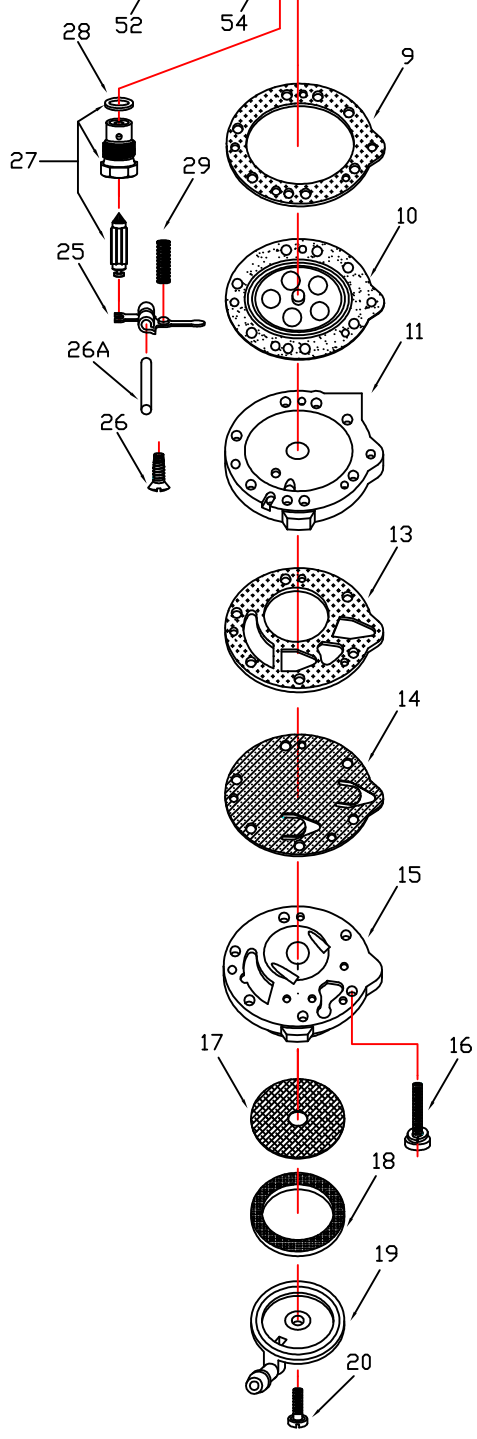


HW- 17A



REF	PART NO:	PART DESCRIPTION
9	+ * 16B-217	DIAPHRAGM GASKET
10	+ * 237-600	DIAPHRAGM ASSEMBLY
11	91A -275	DIAPHRAGM COVER
13	+ * 16B-392	FUEL PUMP GASKET
14	+ * 237-162	FUEL PUMP DIAPHRAGM (STANDARD)
15	141-89	FUEL PUMP BODY
16	15C-51	FUEL PUMP BODY SCREW (6-REQD)
17	95-170	FUEL STRAINER SCREEN
18	* 16B-205	FUEL STRAINER COVER GASKET
19	91A-251	FUEL STRAINER COVER
20	15B-313	FUEL STRAINER COVER RETAINING SCREW
21A	43-1034	IDLE MIXTURE SCREW
21B	24B-449	IDLE MIXTURE SCREW SPRING
21C	78A-256	IDLE MIXTURE SCREW WASHER
21D	44-361	IDLE MIXTURE SCREW PACKING
25	* 155A-27	INLET CONTROL LEVER
26	15B-329	INLET CONTROL LEVER FULCRUM SCREW
26A	32-79	INLET CONTROL LEVER FULCRUM PIN
27	* 233-710P	INLET NEEDLE & SEAT SET
28	16B-199	INLET SEAT GASKET
29	24C-297	INLET TENSION SPRING (46gram)
30A	43-1034	HIGH SPEED MIXTURE SCREW
30B	24B-449	HIGH SPEED MIXTURE SCREW SPRING
30C	78A-256	HIGH SPEED MIXTURE SCREW WASHER
30D	44-361	HIGH SPEED MIXTURE SCREW PACKING
33	29-224	THROTTLE SHAFT CLIP
35	15C-19	THROTTLE SHAFT CLIP RETAINING SCREW
36	24B-381	THROTTLE SHAFT RETURN SPRING
37	14A - 96	THROTTLE SHUTTER
38	15C-20	THROTTLE SHUTTER SCREW
42	13B - 215	THROTTLE SHAFT
43	12 - 1218	THROTTLE LEVER ASSEMBLY
44	15C - 52	THROTTLE LEVER RETAINING SCREW
52	179-62	WELCH PLUG
54	80-160	MAIN PLUG (3-REQD)
55	136-559	CABLE BRACKET & LIMITER ASSEMBLY
56	15C - 67	CABLE BRACKET RETAINING SCREW (2-REQ)
57	15C - 9	LIMITER SCREW
58	24B - 131	LIMITER SCREW SPRING
60	81 - 377	CARBURETTOR MOUNTING NUT (2-REQD)



RK-4HW	REPAIR KIT (STANDARD)
DG-1HW	DIAPHRAGM & GASKET SET (STANDARD)
*	INDICATES CONTENTS OF REPAIR KIT
+	INDICATES CONTENTS OF DIAPHRAGM & GASKET SET

FACTORY MAIN SETTING : 1 TURN- 0 MIN. OPEN  
 FACTORY IDLE SETTING : 1TURN- 10 MIN. OPEN



TILLOTSON LTD.  
 CLASH INDUSTRIAL ESTATE,  
 TRALEE, CO. KERRY,  
 IRELAND.

KARTING CLASS :IRELAND

[www.tillotson-racing.com](http://www.tillotson-racing.com)