

MODEL MS-34A

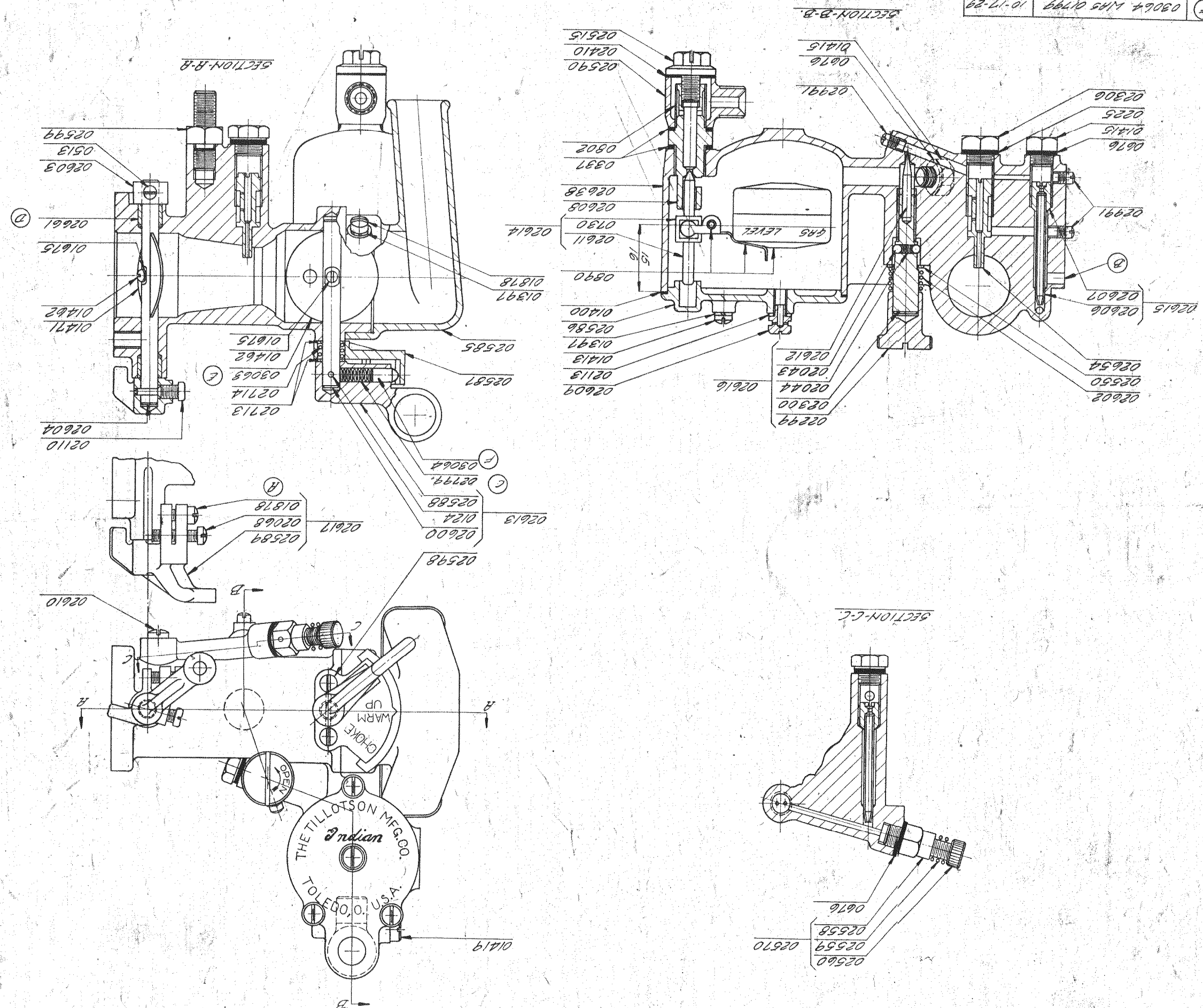
USED ON INDIAN MOTORCYCLE MODEL-35
PARTS LIST

NO	NAME	QTY
0225	GRASSET	1
0337	GRASSET	2
0513	3/16"x1/4" HEROLESS SET SCREW	1
0676	GRASSET	3
0730	INLET VALVE COLLAR	1
0802	INLET CONNECTION GREEN	1
0890	FLOAT	1
0997	8 MACH GREEN LOCKWASHER	6
0400	FLOAT BOWL COVER GRASSET	1
02991	8-32 NUTS LESS SCREW	3
0413	8-32x1/2 SCREW	3
0415	PLUG SCREW	2
0419	FLOAT LEVER PHINION SCREW	1
0462	6-32x1/4 SCREW	2
0471	THROTTLE SHUTTER	1
0303	STRANGLE SHUTTER	1
0175	6 MACH GREEN LOCKWASHER	2
0802	THROTTLE FRICTION PIN	1
02799	STRANGLE FRICTION PIN SPRING	1
0178	8-32x5/16 SCREW	4
02043	ROUSTRING SCREW BALL	2
02044	ROUSTRING SCREW SPRING	1
02068	8-32x5/16 SCREW	1
02110	LEVER SCREW	1
02113	3/16 LOCKWASHER	1
02299	NEEDLE VALVE ROD SCREW BUTTON	1
02300	NEEDLE VALVE ROD SCREW	1
02306	RUE SCREW	1
02410	GRASSET	1
02515	INLET CONNECTION SCREW	1
02530	FUEL ROD WASHER	1
02559	BY PASS ROD NEEDLE SENT	1
02558	BY PASS ROD NEEDLE SPRING	1
02560	BY PASS ROD NEEDLE	1
02585	PIE HOBN	1
02586	FLOAT BOWL COVER	1
02587	CHOKE GUARDHNT	1
02588	CHOKE LEVER	1
02589	THROTTLE LEVER	1
02590	INLET CONNECTION	1
02592	6-32x1/2 FLAT HEAD MACH. SCREW	2
02599	COLLAR STD	1
02600	STRANGLE SHUNT	1
02602	COMPRESSION SPRING	1
02603	THROTTLE SHUNT COLLAR	1
02604	THROTTLE SHUNT	1
02605	THROTTLE SHUNT COLLAR	1
02606	BY PASS TUBE	1
02607	BY PASS PLUG	1
02608	INLET VALVE SENT	1
02609	FLOAT BOWL COVER VENT SCREW	1
02610	RUE SCREW	1
02611	INLET VALVE	1
02612	FUEL ROUSTRING NEEDLE	1
02635	BOOT	1
02654	NOZZLE	1
02713	STRANGLE SHUNT SPRING WASHER	2
02714	STRANGLE SHUNT SPRING	1
02715	THROTTLE SHUNT	1
02716	THROTTLE SHUNT	1
02717	THROTTLE LEVER	1
02718	FUEL ROD SCREW	1
02719	THROTTLE LEVER	1

MS-34A

THE TILLOTSON MFG. CO.-TOLEDO, OHIO
NAME OF PART
MODEL-35
NOTE: AN ALLOWANCE OF ±.010 ON ALL FRACTIONAL DIMENSIONS
DECIMAL DIMENSIONS MUST BE HELD

CH.GE. NO.	WAS	DATE
RETORALDO		4-18-29
DR.N. BY	TRC. BY	DATE
DRG	DRG	12-10-28
CHK'D. BY	APP'D.	
SCALE	1/32"	



①	03064 LHS 01799	10-17-29
②	03063 LHS 01619	10-17-29
③	ADD'D BUSHING-02661	6-14-29
④	02799 LHS 01800	4-16-29
⑤	RANGLE OF INLET CONNECTION CHANGED	3-13-29
⑥	REMOVED RIE BLEED SCREW-02655	2-18-29
⑦	01878 LHS 01970	2-12-29