



TILLOTSON LTD., CLASH INDUSTRIAL ESTATE,
TRALEE, CO. KERRY, IRELAND

PHONE: +353 66 7121911 FAX: +353 66 7124503

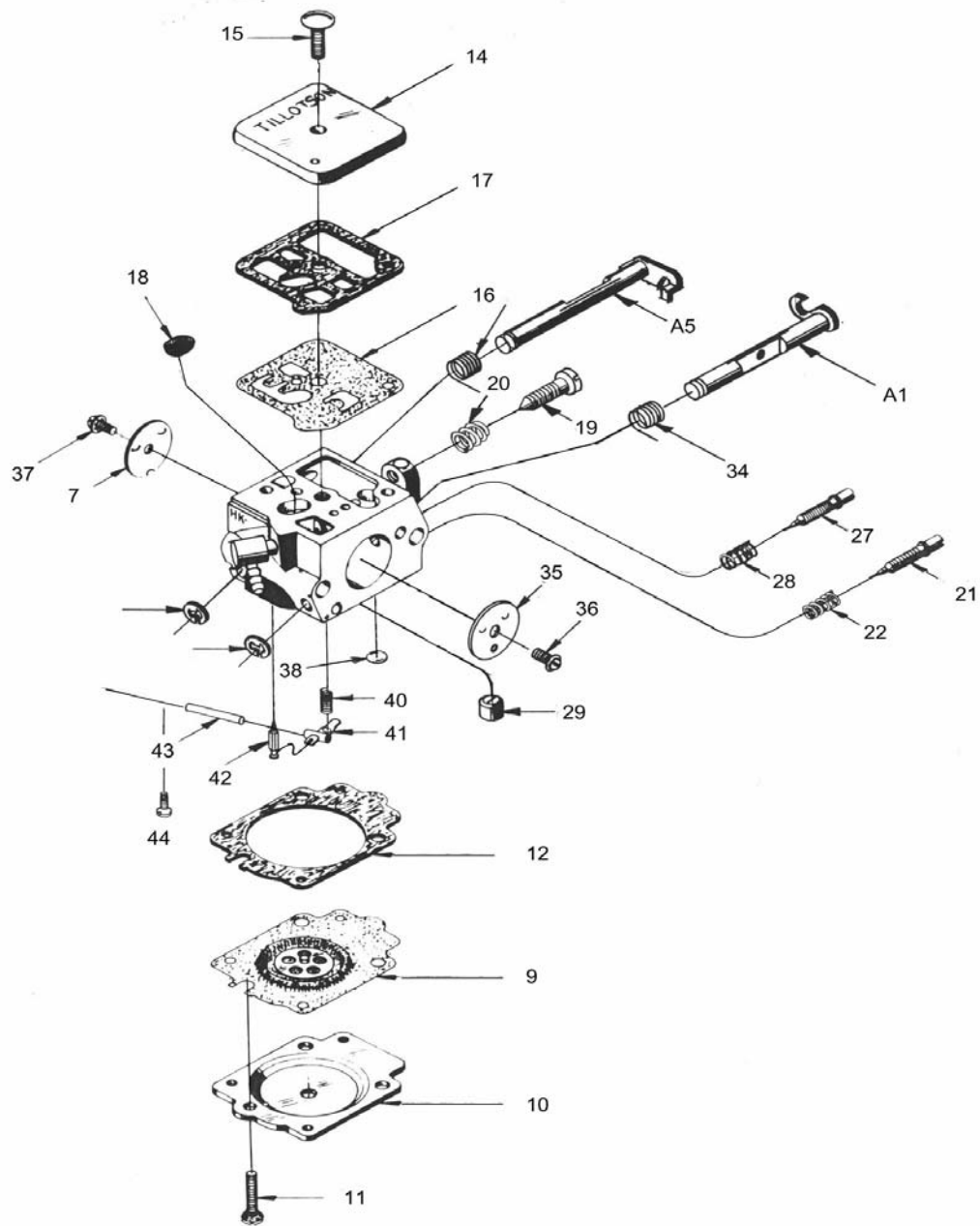
e-mail: sales@tillotson.ie



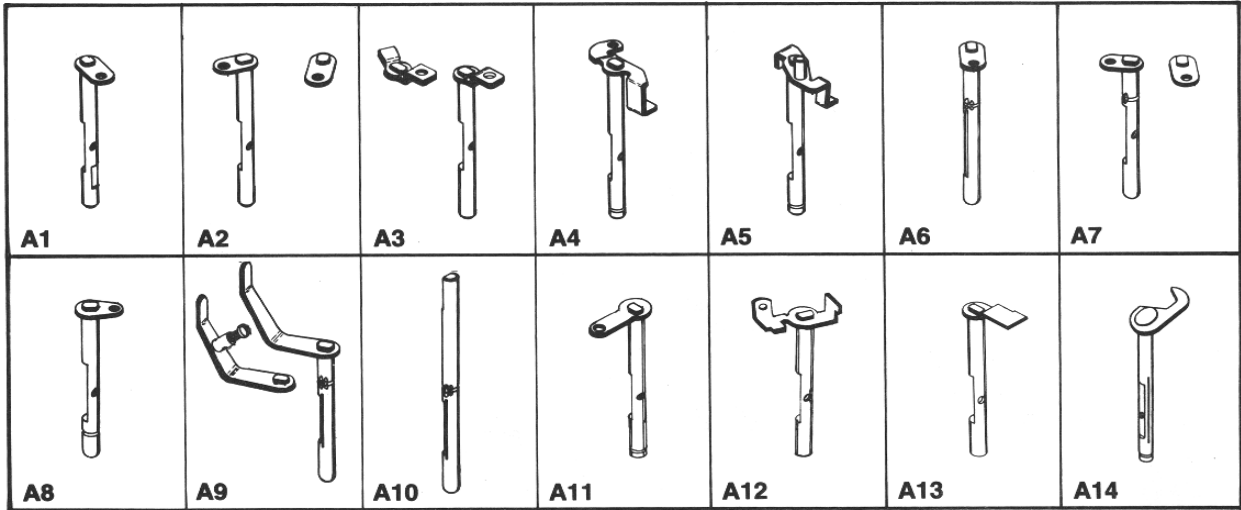
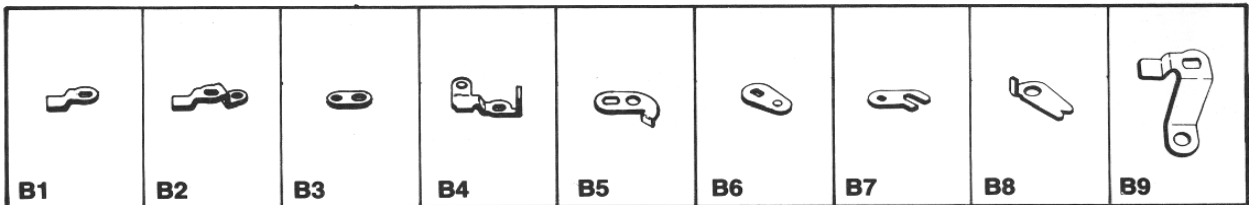
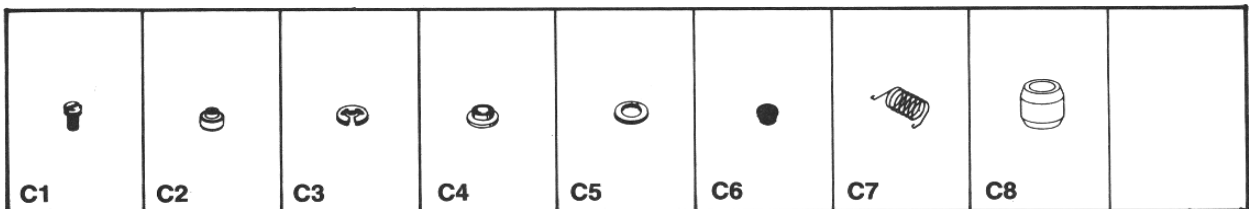
PARTS LIST

Last update: JULY 2014

Illustration of basic parts standard throughout HE series carburettor.
For individual model listing see following pages.



Parts illustrated are typical in appearance
and may not look exactly like the part required

SHAFT & LEVER ASSEMBLIES**LEVERS****MISCELLANEOUS PARTS**

Carburetor Model		HE-1A	HE-2A	HE-3A
Customer		Electrolux Sweden	Andreas Stihl	Alpina Italy
Equipment Model No.			.625 - .628 Diameter	.592-.595 Diameter
Venturi		19/32" 15.08MM	15.88 - 15.95MM	15.0-15.1MM
Ref. No.	Part Name			
1	Body - Channel Screen	95-180		95-180
2	Body - Channel Screen Ret. Ring	55A-212	55A-223	55A-212
3	Check Valve Disc.			
4	Check Valve Disc. Stop			
6	Choke - Friction Spring	24C-8	24C-193	24C-281
A6	Choke - Shaft & Lever			
A9	Choke - Shaft & Lever			
A10	Choke - Shaft			
7	Choke - Shutter	14-471	14-498	14-498
	Choke - Washer	78A-226		
	Choke - Lever	25-458	25-472	26-1291
	Choke - Shutter Screw	15C-20	15C-20	15C-20
	Choke - Friction Ball			206-121
+*9	Diaphragm	237-606	237-606	237-606
10	Diaphragm - Cover	91A-344	91B-205	91A-342
11	Diaphragm - Cover Ret. Screw (3)	15C-6	15C-6	15C-6
+*12	Diaphragm - Gasket	16B-273	16B-273	16B-273
13	Flange Gasket			
14	Fuel - Pump Cover	91B-970	91B-970	91A-330
15	Fuel - Pump Cover Ret. Screw	15B-370	15B-370	15B-370
+*16	Fuel - Pump Diaphragm -	237-205	237-205	237-205
+*17	Fuel - Pump Gasket	16B-272	16B-272	16B-272
*18	Fuel - Strainer Screen	95-177	95-177	95-177
19	Idle Speed - Adjustment Screw	15C-3	15C-3	15B-404
20	Idle Speed - Adjustment Screw Spring	24C-15	24C-15	24C-15
21	Low Speed - Mixture Needle	43A-132	43A-132	43A-132
22	Low Speed - Mixture Needle Spring	24B-331	24B-331	24B-331
*23	Inlet - Control Lever	155A-53	155A-53	155A-53
24	Inlet - Control Lever Fulcrum Pin	32-80	32-80	32-80
	Inlet - Fulcrum Pin Retaining Screw	15B-329	15B-329	15B-329
*25	Inlet - Needle	34-219	34-219	34-219
26	Inlet - Tension Spring	24B-378	24B-374	24B-374
27	High Speed - Mixture Screw	43A-149	43A-132	43A-149
28	High Speed - Mixture Screw Spring	24B-331	24B-331	24B-331
29	Main Nozzle		363-559	
	Main Nozzle Welch Plug	179-60	179-60	
B2	Throttle - Lever	12B-417		12B-289
B3	Throttle - Shaft Sleeve (2)			102-217
B4	Throttle - Lever			
C1	Throttle - Lever Ret. Screw			
C2	Throttle - Lever Retaining Screw	15B-348		15B-348
C3	Throttle - Shaft 'E' Ring	29-220		
A1	Throttle - Shaft & Lever	13-2062	13-2016	13-2007
A3	Throttle - Shaft & Lever			
A4	Throttle - Shaft & Lever			
34	Throttle - Shaft Return Spring	24C-241	24B-458	24B-474
35	Throttle - Shutter		14A-6	14-491
36	Throttle - Shutter Ret. Screw	15C-20	15C-20	15C-20
37	Choke Shutter Screw			
38	Welch Plug			
40	Inlet Spring			
41	Inlet Lever			
42	Inlet Needle			
43	Fulcrum Pin			
44	Fulcrum Screw			
*	Metering - By Pass Chamber Welch Plug	179-59	179-59	179-59
	Repair Parts Kit	RK-1HE	RK-1HE	RK-1HE
	Diaphragm - & Gasket Set	DG-1HK	DG-1HK	DG-1HK

*Indicates contents of Repair Kit

+Indicates contents of Diaphragm & Gasket Set

Carburetor Model		HE-4A	HE-5A	HE-6A
Customer		Jonsereds	Andreas Stihl	Alpina
Equipment Model No.				
Venturi		.531 Diameter	.531 Diameter	5/3" - 16MM
Ref. No.	Part Name			
1	Body - Channel Screen	95-180		
2	Body - Channel Screen Ret. Ring	55A-212		
3	Check Valve Disc.			
4	Check Valve Disc. Stop			
6	Choke - Friction Spring			206-121 24B-281
A6	Choke - Shaft & Lever			
A9	Choke - Shaft & Lever			
A10	Choke - Shaft			
7	Choke - Shutter	14-471	14A-1	
	Choke - Washer			
	Choke - Lever	26-1242		
	Choke - Shutter Screw	15C-20	15C-20	14A-23
	Choke Shutter Screw			15C-20
+*9	Diaphragm	237-606	237-606	237-606
10	Diaphragm - Cover	91A-344	91B-205	91A-344
11	Diaphragm - Cover Ret. Screw (3)	15C-6	15C-6	15C-6
+*12	Diaphragm - Gasket	16B-273	16B-273	16B-273
13	Flange Gasket			
14	Fuel - Pump Cover	91B-214	91B-214	91B-218
15	Fuel - Pump Cover Ret. Screw	15B-370	15B-370	15B-370
+*16	Fuel - Pump Diaphragm -	237-205	237-205	237-160
+*17	Fuel - Pump Gasket	16B-272	16B-272	16B-272
*18	Fuel - Strainer Screen	95-177	95-177	95-177
19	Idle Speed - Adjustment Screw	15C-3	15C-3	15B-404
20	Idle Speed - Adjustment Screw Spring	24C-15	24C-15	24C-15
21	Low Speed - Mixture Needle	43A-132	43A-132	43A-132
22	Low Speed - Mixture Needle	24B-331	24B-331	24B-331
				155A-53
*23	Inlet - Control Lever	155A-53	155A-53	32-80
24	Inlet - Control Lever Fulcrum Pin	32-80	32-80	
	Inlet - Fulcrum Pin Retaining Screw	15B-329		15B-329
*25	Inlet - Needle	34-219		34-219
26	Inlet - Tension Spring	24B-369	24B-374	24B-384
27	High Speed - Mixture Screw	43A-132	43A-132	43A-149
28	High Speed - Mixture Screw Spring	24B-331	24B-331	24B-331
29	Main Nozzle		363-559	363-559
B2	Throttle - Lever	12B-259	12B-392	12B-417
B3	Throttle - Shaft Sleeve (2)	102-217	102-217	102-217
B4	Throttle - Lever			
C1	Throttle - Lever Ret. Screw			
C2	Throttle - Lever Retaining Screw	15B-348	15B-348	15B-348
C3	Throttle - Shaft 'E' Ring	55A-212		
A1	Throttle - Shaft & Lever	13-2025	13-2007	13-2080
A3	Throttle - Shaft & Lever			26-1291
A4	Throttle - Shaft & Lever			
34	Throttle - Shaft Return Spring	24B-456	24B-444	24B-474
35	Throttle - Shutter	14-432	14-432	14A-44
36	Throttle - Shutter Ret. Screw	15C-20	15C-20	15C-20
37	Choke Shutter Screw			
38	Welch Plug			
40	Inlet Spring			
41	Inlet Lever			
42	Inlet Needle			
43	Fulcrum Pin			
44	Fulcrum Screw			
	Main Nozzle Welch Plug	179-60		
*	Metering - By Pass Chamber Welch Plug	179-59	179-59	179-59
	Repair Parts Kit	RK-1HE	RK-1HE	RK-1HE
	Diaphragm - & Gasket Set	DG-1HK	DG-1HK	DG-1HK

*Indicates contents of Repair Kit

+Indicates contents of Diaphragm & Gasket Set

Carburetor Model		HE-7A	HE-8A	HE-9B
Customer		Alpina	Opem	Wacker Germany
Equipment Model No.			.621-.625 Diameter	.453 Diameter
Venturi		11/16"-17.5MM	15.8-15.9MM	11.5MM
Ref. No.	Part Name			
7	Choke - Shutter		27-320	14A-6
	Choke - Washer			
	Choke - Lever			
	Choke - Shutter Screw	14A-23		
	Choke - Shutter Screw	15C-20	15C-20	15C-20
	Choke - Friction Ball	206-121	206-121	206-121
	Choke - Friction Spring	24B-281	24B-281	24B-281
	Choke Spacing Sleeve			102-221
+*9	Diaphragm	237-606	237-606	237-606
10	Diaphragm - Cover	91A-344	91A-373	91A-344
11	Diaphragm - Cover Ret. Screw (3)	15C-6	15C-6	15C-6
+*12	Diaphragm - Gasket	16B-273	16B-273	16B-273
13	Flange Gasket			
14	Fuel - Pump Cover	91B-218	91B-214	91B-218
15	Fuel - Pump Cover Ret. Screw	15B-370	15B-370	15B-370
+*16	Fuel - Pump Diaphragm -	237-205	237-205	237-160
+*17	Fuel - Pump Gasket	16B-272	16B-272	16B-272
*18	Fuel - Strainer Screen	95-177	95-177	95-177
19	Idle Speed - Adjustment Screw	15B-404	15B-404	15B-404
20	Idle Speed - Adjustment Screw Spring	24C-15	24C-15	24C-15
21	Low Speed - Mixture Needle	43A-132	43A-132	
22	Low Speed - Mixture Needle Spring	24B-331	24B-331	
*23	Inlet - Control Lever	155A-53	155A-53	155A-53
24	Inlet - Control Lever Fulcrum Pin	32-80	32-80	32-80
	Inlet - Fulcrum Pin Retaining Screw	15B-329	15B-329	15B-329
*25	Inlet - Needle	34-219	34-219	34-219
26	Inlet - Tension Spring	24B-384	24B-374	
27	High Speed - Mixture Screw	43A-149	43A-149	
28	High Speed - Mixture Screw Spring	24B-331	24B-331	
29	Main Nozzle	363-559	363-559	363-559
B2	Throttle - Lever	12B-477	12B-383	12-1215
B3	Throttle - Shaft Sleeve (2)	102-217		
B4	Throttle - Lever			
C1	Throttle - Lever Ret. Screw			
C2	Throttle - Lever Retaining Screw	15B-348	15B-348	15B-348
C3	Throttle - Shaft 'E' Ring			
A1	Throttle - Shaft & Lever	13-2080	13-1991	13-2130
A3	Throttle - Shaft & Lever	26-1291	26-1196	26A-227
A4	Throttle - Shaft & Lever			
34	Throttle - Shaft Return Spring	24B-474	24B-440	24B-458
35	Throttle - Shutter	14A-44	14-494	14-432
36	Throttle - Shutter Ret. Screw	15C-20	15C-20	15C-20
37	Choke Shutter Screw			
38	Welch Plug			
40	Inlet Spring			
41	Inlet Lever			
42	Inlet Needle			
43	Fulcrum Pin			
44	Fulcrum Screw			
	Main Nozzle Welch Plug			
*	Metering - By Pass Chamber Welch Plug	179-59	179-59	179-59
	Main Jet			49B-87
	Idle Jet			49B-76
	Repair Parts Kit	RK-1HE	RK-1HE	RK-1HE
	Diaphragm - & Gasket Set	DG-1HE	DG-1HE	DG-1HE

*Indicates contents of Repair Kit

+Indicates contents of Diaphragm & Gasket Set

Carburetor Model		HE-10A	
Customer		Alpina	
Equipment Model No.			
Venturi		5/8" - 16MM	
Ref. No.	Part Name		
6	Choke - Friction Spring	24B-281	
A6	Choke - Shaft & Lever		
A9	Choke - Shaft & Lever		
A10	Choke - Shaft		
7	Choke - Shutter		
	Choke - Washer		
	Choke - Lever		
	Choke - Shutter Screw	14A-23	
	Choke - Friction Ball	206-121	
	Choke - Shutter Screw	15C-20	
+*9	Diaphragm	237-606	
10	Diaphragm - Cover	91A-344	
11	Diaphragm - Cover Ret. Screw (3)	15C-6	
+*12	Diaphragm - Gasket	16B-273	
13	Flange Gasket		
14	Fuel - Pump Cover	91B-218	
15	Fuel - Pump Cover Ret. Screw	15B-307	
+*16	Fuel - Pump Diaphragm -	237-160	
+*17	Fuel - Pump Gasket	16B-272	
*18	Fuel - Strainer Screen	95-177	
19	Idle Speed - Adjustment Screw	15B-404	
20	Idle Speed - Adjustment Screw Spring	24C-15	
21	Low Speed - Mixture Needle	43A-187	
22	Low Speed - Mixture Needle Spring	24C-270	
*23	Inlet - Control Lever	155A-53	
24	Inlet - Control Lever Fulcrum Pin	32-80	
	Inlet - Fulcrum Pin Retaining Screw	15B-329	
*25	Inlet - Needle	34-219	
26	Inlet - Tension Spring	24B-384	
27	High Speed - Mixture Screw	43A-206	
28	High Speed - Mixture Screw Spring	24C-270	
29	Main Nozzle	363-651	
	Limiter Module	198-402	
	Limiter Cap (2)	318-32	
B2	Throttle - Lever	12B-417	
B3	Throttle - Shaft Sleeve (2)	102-217	
B4	Throttle - Lever		
B8	O' Ring - Mixture Needle (2)	44-350	
C1	Throttle - Lever Ret. Screw		
C2	Throttle - Lever Retaining Screw	15B-348	
C3	Throttle - Shaft 'E' Ring		
A1	Throttle - Shaft & Lever	13-2080	
A3	Throttle - Shaft & Lever	26-1291	
A4	Throttle - Shaft & Lever		
34	Throttle - Shaft Return Spring	24B-474	
35	Throttle - Shutter	14A-44	
36	Throttle - Shutter Ret. Screw	15C-20	
37	Choke Shutter Screw		
38	Welch Plug		
40	Inlet Spring		
41	Inlet Lever		
42	Inlet Needle		
43	Fulcrum Pin		
44	Fulcrum Screw		
	Main Nozzle Welch Plug		
*	Metering - By Pass Chamber Welch Plug	179-59	
	Repair Parts Kit	RK-1HE	
	Diaphragm - & Gasket Set	DG-1HE	

*Indicates contents of Repair Kit

+Indicates contents of Diaphragm & Gasket Set



HE SERIES

Carburetor Model		HE-11A	HE-12A	HE-19A
Customer		Wacker Germany	3W Modelmotoren GMBH	Various
Equipment Model No.				
Venturi		.512 - 13mm	13.5mm	16.5mm
Ref. No.	Part Name			
1	Fuel Pump - Cover Screw	15B-370	15B-370	
2	Fuel Pump - Cover	91B-217	91B-218	
3	Fuel Pump - Gasket	+*16B-272	+*16B-272	
4	Fuel Pump - Diaphragm	+*237-160	+*237-205	
5	Fuel Pump - Inlet Screen	*95-233	*95-177	
6	Fuel Inlet - Tension Spring	24B-378	24B-378	
7	Fuel Inlet - Control Lever	*155-53	*155A-53	
8	Fuel Inlet- Fulcrum Pin	32-80	32-80	
9	Fuel Inlet - Fulcrum Pin Retaining Screw	15B-329	15B-345	
10	Fuel Inlet - Needle	*34-219	*34-219	
11	Metering - Covering Screw	15C-6	15C-6	
12	Metering - Cover	91A-344	91A-344	
13	Metering - Diaphragm	+*237-606	+*237-606	
14	Metering - Diaphragm Gasket	+*16B-273	+*16B-273	
	Main Nozzle Welch Plug		179-60	
	Main Nozzle Screen		95-180	
	Main Nozzle Retaining Ring		55A-212	
18	Metering - Main Nozzle	363-559		
19	Metering - By Pass Chamber Welch Plug	*179-59	*179-59	
20	Idle Speed - Adjustment Screw	15B-404	15C-3	
21	Idle Speed - Adjustment Screw Spring	24C-15	24C-15	
22	Idle Jet	49B-76		
22	Low Speed - Mixture Needle		43A-132	
23	Low Speed - Mixture Needle Spring		24B-331	
24	Main Jet			
24	High Speed - Mixture Needle	49B-87	43A-149	
25	High Speed - Mixture Needle Spring		24B-331	
	Choke - "E" Ring		29-220	
	Choke - Washer		78A-226	
A3	Choke - Lever		25-458	
26A	Choke - Shaft	26A-227		
26B	Choke - Lever	25-495		
26C	Choke - Lever Screw	15B-348		
27	Choke - Friction Spring	24B-281		
27	Choke - Return Spring		24C-8	
28	Choke - Friction Ball	206-121		
29	Choke - Shutter	14A-6	14A-1	
30	Choke - Shutter Screw	15C-20	15C-20	
	Choke Spacing Sleeve	102-221		
A1	Throttle - Shaft & Lever	13-2130	13-2062	
31	Throttle - Return Spring	24B-458	24B-444	
32	Throttle - Shutter	14-432	14-471	
33	Throttle - Shutter Screw	15C-20	15C-20	
B2	Throttle - Lever Assembly Secondary	12-1215	12B-417	
C2	Throttle - Lever Retaining Screw	15B-348	15B-348	
	Repair Parts Kit	RK-1HE	RK-1HE	RK-3HE
	Diaphragm - & Gasket Set	DG-1HK	DG-1HK	DG-3HE

*Indicates contents of Repair Kit

+Indicates contents of Diaphragm & Gasket Set



HE SERIES

Carburetor Model		HE-20A	HE-22A	HE-23A
Customer		Andreas Stihl		Various
Equipment Model No.				
Venturi		.531"	15.0mm	15.0mm
Ref. No.	Part Name			
1	Fuel Pump - Cover Screw	15B-370	15C-78	15C-78
2	Fuel Pump - Cover	91B-217	91-B277	91-1033
3	Fuel Pump - Gasket	+*16B-272	16B-409	16B-395
4	Fuel Pump - Diaphragm	+*237-205	237-224	237-224
5	Fuel Pump - Inlet Screen	*95-177	95-242	95-242
6	Fuel Inlet - Tension Spring	24B-374	24-B323	24-B323
7	Fuel Inlet - Control Lever	*155-53	155-A77	155-A77
8	Fuel Inlet- Fulcrum Pin	32-80	32-91	32-91
9	Fuel Inlet - Fulcrum Pin Retaining Screw	15B-345	15C-72	15-C72
10	Fuel Inlet - Needle	*34-219	34-230	34-230
11	Metering - Covering Screw	15C-30	15C-79 (4)	15C-79
12	Metering - Cover	91B-292	91B-294	91A-295
13	Metering - Diaphragm	+*237-606	237-690	237-690
14	Metering - Diaphragm Gasket	+*16B-273	16B-395	16B-409
	Main Nozzle		363-686	363-686
	Main Nozzle Screen			
	Main Nozzle Retaining Ring			
18	Metering - Main Nozzle			
19	Metering - By Pass Chamber Welch Plug	*179-59		
20	Idle Speed - Adjustment Screw	15B-404	15-C69	15-C104
21	Idle Speed - Adjustment Screw Spring	24C-15		
22	Idle Jet			
22	Low Speed - Mixture Needle	43A-2	43-A230	43-A230
23	Low Speed - Mixture Needle Spring	24B-331	24-C301	24-C301
24	Main Jet			
24	High Speed - Mixture Needle	43A-2	43A-231	43-A203
25	High Speed - Mixture Needle Spring	24B-331	24C-301	24-C301
	Choke - "E" Ring	55A-223		
	Choke - Washer			
A3	Choke - Lever	26-1269		
A6	Choke - Shaft & Lever		26-1325	26-1326
26A	Choke - Shaft			
26B	Choke - Lever			
26C	Choke - Lever Screw			
27	Choke - Friction Spring			
27	Choke - Return Spring	24C-193		
28	Choke - Friction Ball			
29	Choke - Shutter	14-498	27-382	
30	Choke - Shutter Screw	15C-20	15-C20	15-C20
	Choke Spacing Sleeve			
A1	Throttle - Shaft & Lever	13-2151		
31	Throttle - Return Spring	24B-458	24C-332	24-C332
32	Throttle - Shutter	14A-99	14A-83	14-A83
33	Throttle - Shutter Screw	15C-20	15C-20	15-C20
B2	Throttle - Lever Assembly Secondary			
B8	"O" Ring - Mixture Needle		44-362	44-362
C2	Throttle - Lever Retaining Screw			
	Throttle "E" Ring	55A-223		
	Repair Parts Kit	RK-1HE	RK-2HE	RK-2HE
	Diaphragm - & Gasket Set	DG-1HK	DG-2HE	DG-2HE

*Indicates contents of Repair Kit

+Indicates contents of Diaphragm & Gasket Set