



TILLOTSON LTD., CLASH INDUSTRIAL ESTATE,
TRALEE, CO. KERRY, IRELAND

PHONE: +353 66 7121911 FAX: +353 66 7124503

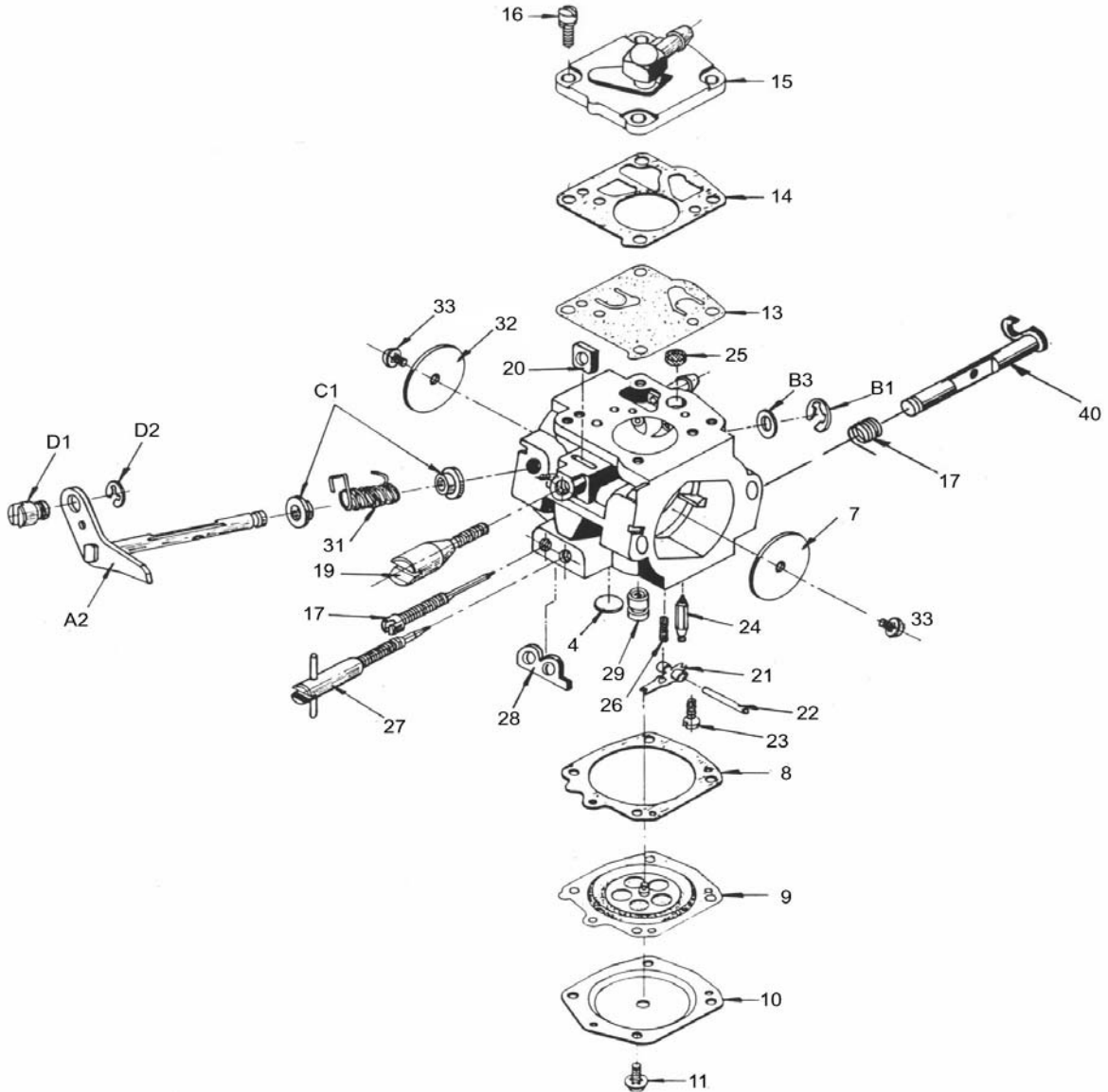
e-mail: sales@tillotson.ie



PARTS LIST

Last update: JULY 2000

Illustration of basic parts standard throughout HT series carburettor.
For individual model listing see following pages.



Parts illustrated are typical in appearance
and may not look exactly like the part required



HT SERIES

Carburetor Model		HT-5A	HT-7A	HT-9A
Customer		Andreas Stihl	Andreas Stihl	Limbach Germany
Equipment Model No.				
Venturi		57/64"	57/64"	23.5MM
Ref. No.	Part Name			
*4	Body Channel Welch Plug (Small)	179-59	179-59	179-59
7	Choke Shutter	27-360	27-360	
+*8	Diaphragm Gasket	16B-226	16B-226	16B-226
+*9	Diaphragm	237-653	237-653	237-601
10	Diaphragm Cover	91A-274	91B-231	91A-274
11	Diaphragm Cover Ret. Screw & Lockwasher (4)	15C-19	15B-333	15C-14
12	Flange Gasket	16B-376	16B-376	
13	Fuel Pump Diaphragm	237-143	237-143	237-143
14	Fuel Pump Gasket	16B-227	16B-227	16B-227
15	Fuel Pump Cover	91-963	91-963	91-1012
16	Fuel Pump Cover Ret. Screw & Lockwasher (4)	15C-30	15C-30	15C-30
17	Idle Mixture Screw	43A-127	43A-159	43A-159
	Idle Mixture Screw Retainer	55A-304	55A-306	55A-306
	Idle Speed Screw Retainer	55A-303		
19	Idle Speed Screw	15C-24	15C-24	15C-24
*21	Inlet Control Lever	155A-26	155A-71	155A-26
22	Inlet Fulcrum Pin	32-78	32-78	32-78
23	Inlet Fulcrum Pin Ret. Screw	15B-329	15B-329	15B-329
*24	Inlet Needle	34-216	34-216	34-216
*25	Inlet Screen	95-177	95-177	95-177
26	Inlet Tension Spring	24B-345	24B-345	24B-345
27	High Speed Mixture Screw	43A-131	43A-161	43A-161
	High Speed Mixture Screw Retainer	55A-304	55A-306	55A-306
31	Throttle Shaft Return Spring	24C-219	24C-219	24B-444
32	Throttle Shutter	14A-7	14A-7	14A-50
33	Throttle Shutter Screw & Lockwasher	15B-414	15B-307	15B-307
40	Choke Shaft & Lever			
A2	Throttle Shaft & Lever	13-2021	13-2021	13-2124
B3	Throttle Shaft Washer	78A-226	78A-226	78A-280
	Remote Fixed Jet	49A-483		49A-483
	Nozzle Check Valve	363-600	363-600	363-600
	Part Throttle Orifice & Check Valve			363-621
B1	Choke Shaft E-Ring	29-220	29-220	29-220
B2	Choke Shutter Screw	15B-414	15B-307	
	Choke Shaft & Lever	26-1258	26-1258	
C17	Choke Return Spring	24C-220	24C-220	
	Repair Parts Kit	RK-3HT	RK-3HT	RK-18HS
	Diaphragm & Gasket Set	DG-7HS/T	DG-7HS/T	DG-2HS/T

*Indicates contents of Repair Kit

+Indicates contents of Diaphragm & Gasket Set

Carburetor Model		HT-11D	HT-12A	HT-12B
Customer		Andreas Stihl	Andreas Stihl	Andreas Stihl
Equipment Model No.				
Venturi		57/64"	57/64"	57/64"
Ref. No.	Part Name			
*4	Body Channel Welch Plug (Small)	179-59	179-59	179-59
7	Choke Shutter	27-360	27-360	27-360
+*8	Diaphragm Gasket	16B-226	16B-226	16B-226
+*9	Diaphragm	237-653	237-653	237-653
10	Diaphragm Cover	91B-231	91B-231	91B-231
11	Diaphragm Cover Ret. Screw & Lockwasher (4)	15C-53	15C-53	15C-53
12	Flange Gasket			
13	Fuel Pump Diaphragm	237-143	237-143	237-143
14	Fuel Pump Gasket	16B-227	16B-227	16B-227
15	Fuel Pump Cover	91-963	91-963	91-963
16	Fuel Pump Cover Ret. Screw & Lockwasher (4)	15C-30	15C-30	15C-30
17	Idle Mixture Screw	43A-183	43A-191	43A-191
	Idle Mixture Screw Retainer	55A-306		
	Idle Speed Screw Retainer	55A-303	55A-303	55A-303
19	Idle Speed Screw	15C-24	15C-24	15C-24
	Idle Mixture Screw Spring		24C-270	24C-270
*21	Inlet Control Lever	155A-71	155A-71	155A-71
22	Inlet Fulcrum Pin	32-78	32-78	32-78
23	Inlet Fulcrum Pin Ret. Screw	15B-329	15B-329	15B-329
*24	Inlet Needle	34-216	34-216	34-216
*25	Inlet Screen	95-177	95-177	95-177
26	Inlet Tension Spring	24C-269	24C-269	24C-269
27	High Speed Mixture Screw	43A-189	43A-190	43A-190
	High Speed Mixture Screw Retainer	55A-306		
	High Speed Mixture Screw Spring		24C-270	24C-270
	High & Idle Speed 'O' Rings		44-350	44-350
	High & Idle Speed Limiter Caps		318-32	318-32
31	Throttle Shaft Return Spring	24C-268	24C-268	24C-268
32	Throttle Shutter	14A-60	14A-60	14A-60
33	Throttle Shutter Screw & Lockwasher	15C-20	15C-20	15C-20
40	Choke Shaft & Lever			
A2	Throttle Shaft & Lever	13-2021	13-2021	13-2021
B3	Throttle Shaft Washer	78A-280	78A-280	78A-280
B1	Throttle Shaft "E" Ring	29-220	29-220	29-220
	Throttle Shaft Sleeve (2)	102-217	102-217	102-217
	Remote Fixed Jet	49B-32	49B-32	49B-32
	Nozzle Check Valve	363-630	363-630	363-630
	Part Throttle Orifice & Check Valve	363-633	363-633	363-633
	Limiter Module		198-405	198-409
B1	Choke Shaft E-Ring	29-220	29-220	29-220
B2	Choke Shutter Screw	15C-20	15C-20	15C-20
	Choke Shaft & Lever	26-1258	26-1258	26-1258
C17	Choke Return Spring	24C-220	24C-220	24C-220
	Repair Parts Kit	RK-28HS	RK-28HS	RK-28HS
	Diaphragm & Gasket Set	DG-7HS	DG-7HS	DG-7HS

*Indicates contents of Repair Kit
+Indicates contents of Diaphragm & Gasket Set

Carburetor Model		HT-12C	HT-13A	
Customer		Andreas Stihl	Limbach Germany	
Equipment Model No.				
Venturi		57/64"	23.5	
Ref. No.	Part Name			
*4	Body Channel Welch Plug (Small)	179-59	179-59	
7	Choke Shutter	27-360		
+*8	Diaphragm Gasket	16B-226	16B-226	
+*9	Diaphragm	237-653	237-601	
10	Diaphragm Cover	91B-231	91A-274	
11	Diaphragm Cover Ret. Screw & Lockwasher (4)	15C-53	15C-19	
12	Flange Gasket			
13	Fuel Pump Diaphragm	237-143		
14	Fuel Pump Gasket	16B-227		
15	Fuel Pump Cover	91-963		
16	Fuel Pump Cover Ret. Screw & Lockwasher (4)	15C-30	15C-30	
17	Idle Mixture Screw	49A-191	43A-159	
	Idle Mixture Screw Retainer		55A-306	
	Idle Speed Screw Retainer	55A-303		
19	Idle Speed Screw	15C-24		
	Idle Mixture Screw Spring	24C-270		
*21	Inlet Control Lever	155A-71	155A-26	
22	Inlet Fulcrum Pin	32-78	32-78	
23	Inlet Fulcrum Pin Ret. Screw	15B-329	15B-329	
*24	Inlet Needle	34-216	34-216	
*25	Inlet Screen	95-177	95-177	
26	Inlet Tension Spring	24C-269	24B-299	
27	High Speed Mixture Screw	43A-190	43A-161	
	High Speed Mixture Screw Retainer		55A-306	
	High Speed Mixture Screw Spring	24C-270		
	High & Idle Speed 'O' Rings	44-350		
	High & Idle Speed Limiter Caps	318-32		
31	Throttle Shaft Return Spring	24C-268	24C-219	
32	Throttle Shutter	14A-60	14A-64	
33	Throttle Shutter Screw & Lockwasher	15C-20	15C-20	
40	Choke Shaft & Lever			
A2	Throttle Shaft & Lever	13-2021	13-2124	
B3	Throttle Shaft Washer	78A-280	78A-280	
B1	Throttle Shaft "E" Ring	29-220	29-220	
	Throttle Shaft Sleeve (2)	102-217		
	Remote Fixed Jet	49B-33	49A-483	
	Nozzle Check Valve	363-655	363-600	
	Part Throttle Orifice & Check Valve	363-633	363-621	
	Limiter Module	198-409		
*	Fuel Connector "O" Ring		44-352	
	Fuel Connector Elbow		68-418	
B1	Choke Shaft E-Ring	29-220		
B2	Choke Shutter Screw	15C-20		
	Choke Shaft & Lever	26-1258		
C17	Choke Return Spring	24C-220		
	Repair Parts Kit	RK-28HS	RK-4HT	
	Diaphragm & Gasket Set	DG-7HS		

*Indicates contents of Repair Kit
 +Indicates contents of Diaphragm & Gasket Set